

# CCI Europe Conference 2026

## Scottish Event Campus (SEC), Glasgow, Scotland

### 4 May – 6 May 2026



Solving  
Kids'  
Cancer  
UK

Dear CCI Friends,

Solving Kids' Cancer UK warmly welcomes fellow CCI-e members to Glasgow, Scotland's largest city with lots of attractions and cultural must-sees – spanning art, architecture and design, history and heritage, music, food and drink, urban adventure and parks and gardens. We have gathered some key information to help make your visit a little easier and more enjoyable.



## Travel from the airport



Glasgow city centre is just 8 miles (13km) from Glasgow (GLA) airport.



**Taxi travel from the airport:** The airport has a fleet of 180 taxis, easily recognizable by their iconic white colour, and are readily available at the pick-up location just outside the Terminal building. No pre-booking is required. The journey to the SEC takes approx 20 minutes.



**Bus travel from the airport:** The **Glasgow Airport Express Service 500** runs 24 hours per day straight into the heart of the city (approx 20 minute journey). Buses depart from directly in front of the terminal building **from stance 1**. Once in the city centre, the SEC is a five-minute taxi or **short train journey from Glasgow Central station**.



**Train travel from the airport:** Download the **ScotRail app** for train times and tickets. For the train from **Glasgow Airport**, the nearest station is **Paisley Gilmour Street** – just over one mile from the terminal. **From Paisley Gilmour Street**, take the train to **Glasgow Central** (10 mins) and change trains to go from **Glasgow Central** to **Exhibition Centre** (3 mins).

## Scottish Event Campus (SEC) Scottish Event Campus

- There is a dedicated **train station on site**, only **2 stops from the city centre**.
- The SEC is set along the banks of the **River Clyde**.
- There are 1,500 hotels bedrooms onsite and a further 10,000 within 2km of the SEC.

The **ScotRail Conference Rover ticket** lets you travel around by rail for five days within the **Glasgow Conference Zone for just £5** (pricing may be subject to change). This offers unlimited train travel from Exhibition Centre (2 minute walk from SEC) across the city centre as well as discounted advance travel across Scotland for any tickets purchased over the conference dates. You can purchase your ticket when you arrive in Glasgow at any station with your conference badge or proof of registration. More information can be found [here](#).



## Hotels and accommodation

There are hotels **on the Scottish Event Campus** and **others located close by**. The **Glasgow Convention Bureau** is the official accommodation provider for the conference - delegates can book through [this link](#).



Or you can book a hotel direct:

[Moxy Glasgow SEC](#)

[Courtyard by Marriott Glasgow SEC](#)

[Premier Inn Glasgow Pacific Quay \(SECC\)](#)

[Crown Plaza Glasgow by IHG](#)

[Hilton Garden Inn Glasgow City Centre](#)

[Village Hotel Glasgow](#)



The **Scottish Event Campus** address is **Exhibition Way, Glasgow, G3 8YW**  
<https://www.sec.co.uk/>

## Other useful things to know



**112** is the free-of-charge, pan-European emergency number, to contact the emergency services



The currency is **Sterling** (£1 = €1.15)



The first day of the conference (Monday) is a **Bank/Public Holiday** in Scotland (and across the United Kingdom), so some of the shops and local businesses may be closed on this day.



You can enjoy Glasgow with a range of **conference delegate offers** to include tour offers – further details can be found [here](#).



Scottish  
Event  
Campus

**The Scottish Event Campus** used to be called the Scottish Exhibition & Conference Centre (SECC) so you may see this reference on local maps etc.





## Things to see and do



The pin on the map above shows the location of the **Scottish Event Campus**



### Glasgow Riverside Walk

#### Glasgow city centre

Enjoy a stroll along Glasgow's rejuvenated riverside featuring luxury penthouses, the iconic 'squinty' bridge, the much acclaimed **Riverside Museum** (free entry) and **The Tall Ship** (entry fee applies).



### Glasgow Cathedral

#### 1 mile from Glasgow city centre

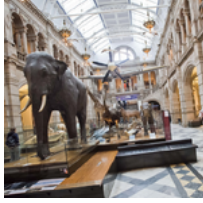
Also known as St Mungo's Cathedral, after Glasgow's patron saint, it is the only medieval cathedral on the Scottish mainland to have survived the Protestant Reformation of 1560 virtually intact.



### Glasgow Botanic Gardens and Kibble Palace

#### 2 miles from Glasgow city centre

An oasis of calm in Glasgow's west, these stunning gardens provide a welcome break from the bustle of city life, and offer walks by the River Kelvin.



### Kelvingrove Art Gallery and Museum

#### 2 miles from Glasgow city centre

Houses one of Europe's great art collections. It is among the top three free to enter visitor attractions in Scotland and one of the most visited museums in the UK. Opened in 1901, it has 22 themed galleries displaying an astonishing 8,000 objects.



### The Clydeside Distillery

#### 2 miles from Glasgow city centre

Glasgow's first city centre whisky distillery. Visitors will discover the skills and craftsmanship which goes into making excellent single malt Scotch whiskey today.



### Shopping

#### Glasgow city centre

Visitors can indulge in some retail therapy in over 1,500 shops ranging from malls (like the St Enoch Centre) to independent boutiques.

**More information on visiting Glasgow can be found [here](#).**

